

2017 Season Improvement Process

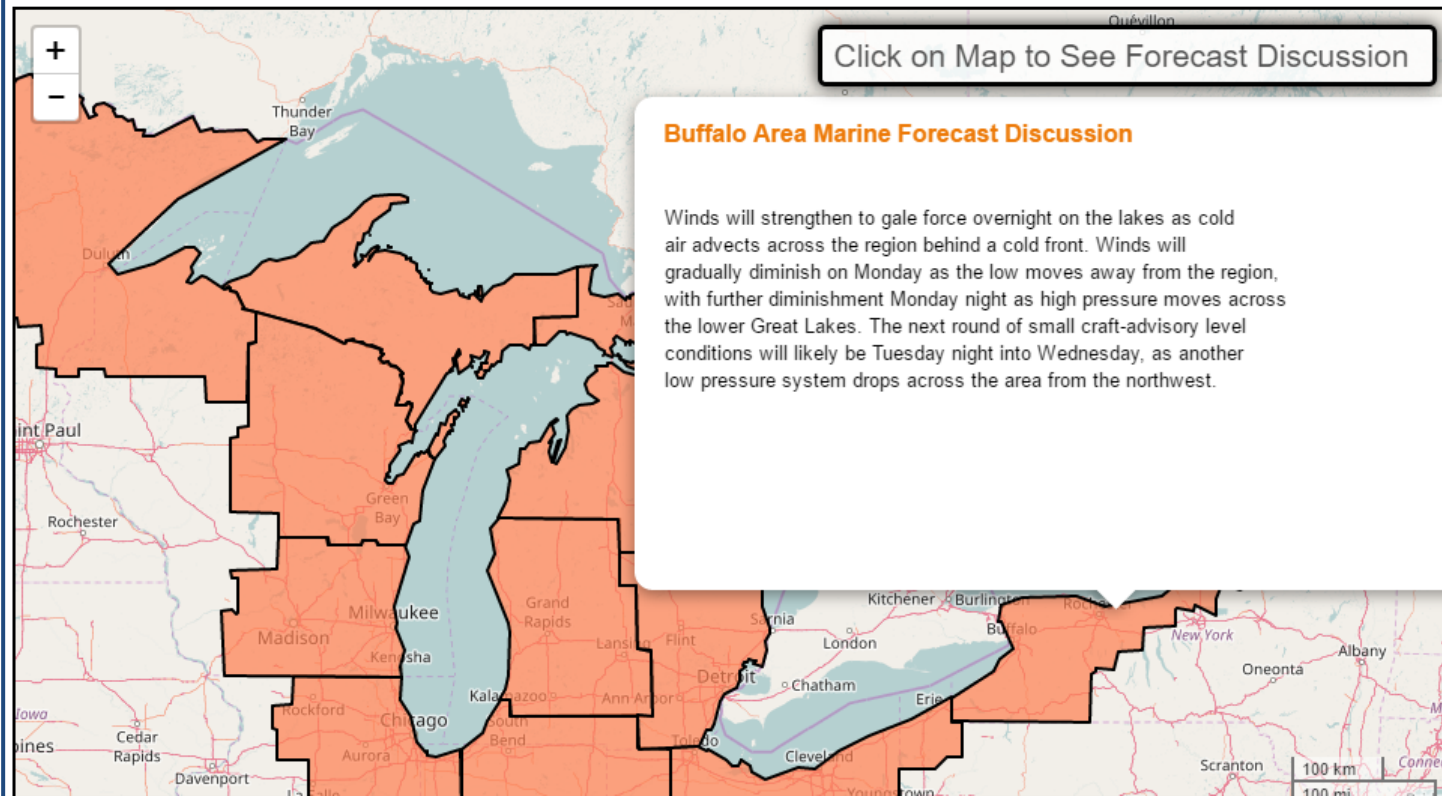
Brian Hirsch
Marine Program Manager
National Weather Service

Marine Weather Discussion

<http://www.weather.gov/greatlakes/afd>

Forecaster Comments

Great Lakes Area Forecast Discussions



Marine Weather Discussion

- Provides a large picture focus
- Provides insight into the forecast
- Similar to the summary in the Open Lake Forecast

Forecast Changes

<http://forecast.weather.gov/product.php?site=dtx&product=glf&issuedby=lh> → → → → → → → →
<http://www.weather.gov/Dtx/Glftable>

Meteorologists will make the simple hard



OK, Class who can tell me how Barometric Pressure affects your shadow?

WARNING

**METEOROLOGIST
HARD AT WORK
DO NOT DISTURB**

UNLESS YOU WANT TO TALK ABOUT WEATHER FORECASTS
OR OTHER FUN STUFF.

© 2010 COWBOY CAMEO.COM All Rights Reserved

GLFLH

OPEN LAKE FORECAST FOR LAKE HURON
NATIONAL WEATHER SERVICE DETROIT/PONTIAC MI
944 AM EST MON FEB 13 2017

FOR WATERS BEYOND FIVE NAUTICAL MILES OFF SHORE ON LAKE HURON

WAVES ARE THE SIGNIFICANT WAVE HEIGHT - THE AVERAGE OF THE HIGHEST
1/3 OF THE WAVE SPECTRUM. OCCASIONAL WAVE HEIGHT IS THE AVERAGE OF
THE HIGHEST 1/10 OF THE WAVE SPECTRUM.

GLFLH

EXPERIMENTAL TABULAR OPEN LAKE FORECAST FOR LAKE HURON
NATIONAL WEATHER SERVICE DETROIT/PONTIAC MI
1005 AM EST MON FEB 13 2017

WAVES ARE THE SIGNIFICANT WAVE HEIGHT - THE AVERAGE OF THE HIGHEST
1/3 OF THE WAVE SPECTRUM. OCCASIONAL WAVE HEIGHT IS THE AVERAGE OF
THE HIGHEST 1/10 OF THE WAVE SPECTRUM.

We want your support this season in evaluating this change.

.TUESDAY...WEST WINDS 10 TO 15 KNOTS INCREASING TO 15 TO 20 KNOTS
IN THE LATE MORNING AND AFTERNOON. A CHANCE OF SNOW SHOWERS.
WAVES 3 TO 5 FEET.

.TUESDAY NIGHT...WEST WINDS 15 TO 20 KNOTS WITH GUSTS UP TO
30 KNOTS BECOMING NORTHWEST 20 TO 25 KNOTS WITH GUSTS UP TO
35 KNOTS AFTER MIDNIGHT. SCATTERED SNOW SHOWERS. WAVES 4 TO
6 FEET. WAVES OCCASIONALLY AROUND 8 FEET.

.WEDNESDAY...NORTHWEST WINDS 20 TO 25 KNOTS WITH GUSTS UP TO
35 KNOTS BECOMING NORTH 10 TO 15 KNOTS. SCATTERED SNOW SHOWERS
EARLY IN THE MORNING. WAVES 4 TO 6 FEET SUBSIDING TO 2 TO 4 FEET
LATE IN THE EVENING. WAVES OCCASIONALLY AROUND 8 FEET.

.THURSDAY...NORTHWEST WINDS 5 TO 10 KNOTS BECOMING LIGHT AND
VARIABLE. WAVES 1 TO 3 FEET.

.FRIDAY...SOUTHEAST WINDS 5 TO 10 KNOTS. WAVES 2 FEET OR LESS.

.TONIGHT...

WEATHER.....MOSTLY CLOUDY WITH CHANCE OF SNOW SHOWERS.

SFC WINDS.....SOUTHWEST 15 TO 20 KNOTS.

100-FT WINDS.....SOUTHWEST 20 TO 25 KNOTS.

SIG WAVES.....3 TO 5 FEET / 1-2 METERS /.

OCNL WAVES.....AROUND 6 FEET / 2 METERS /.

.TUESDAY...

WEATHER.....CLOUDY WITH CHANCE OF SNOW SHOWERS.

SFC WINDS.....WEST 15 TO 20 KNOTS.

100-FT WINDS.....WEST 20 TO 25 KNOTS.

SIG WAVES.....3 TO 5 FEET / 1-2 METERS /.

Web Changes

More - Better

To provide the state of the science provides more resolution than we can convey in words.

As we add more data and better resolution our challenge is to phase out some products or formats over time. This is both old reliable text formats and old graphical webpages.

We need to change and we want your help to make sure our changes are well received.



IBM, 1980s



iPad 3, 2012

We have been making an effort to transition to a new web platform.

[Weather.gov/GreatLakes](https://www.weather.gov/GreatLakes)

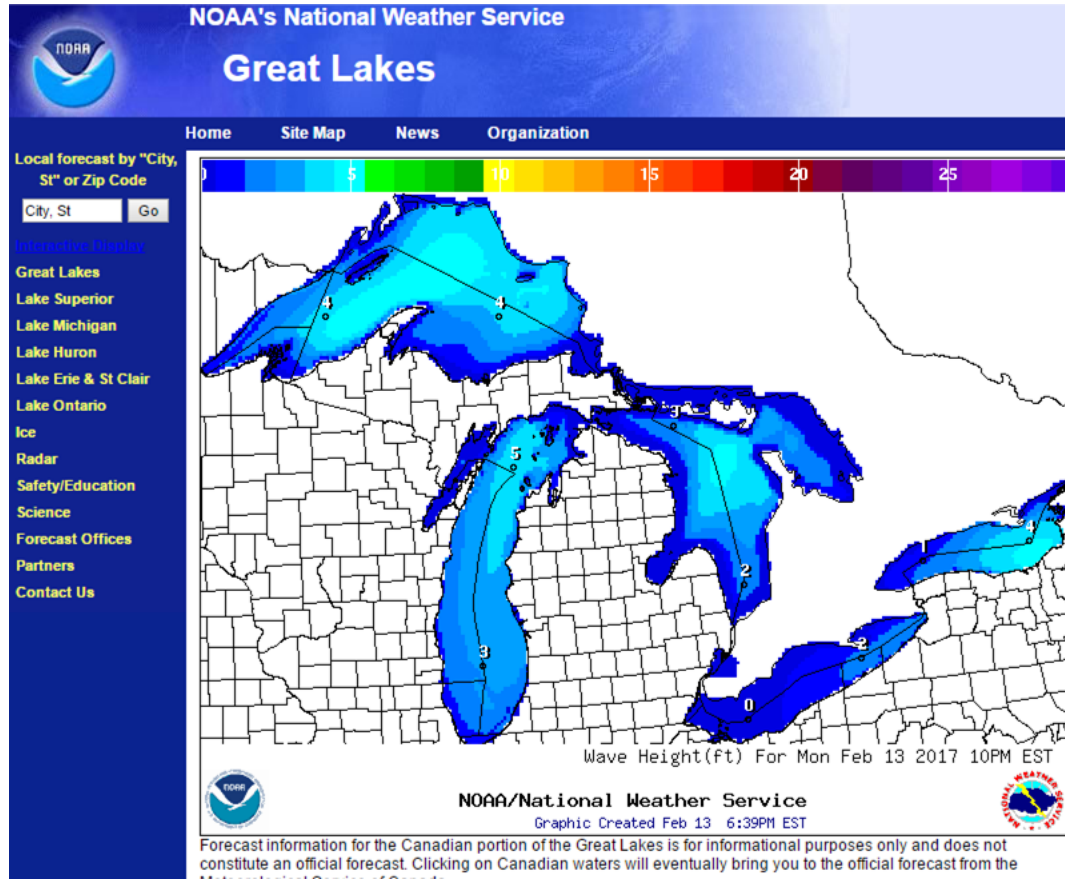
Problem, we are mostly meteorologists and not web designers and some of the new we understand you find it difficult or too slow to load.

For you to access many of these improvements in forecasts, down to hourly data, require Web updates.

I'm going to need your help





www.crh.noaa.gov/greatlakes?



weather.gov/greatlakes?

weather.gov/greatlakes/

  **NATIONAL WEATHER SERVICE**
NATIONAL OCEANIC AND ATMOSPHERIC ADMINISTRATION

HOME FORECAST PASTWEATHER SAFETY INFORMATION EDUCATION NEWS SEARCH ABOUT

Local forecast by "City, St" or ZIP code


[Location Help](#)

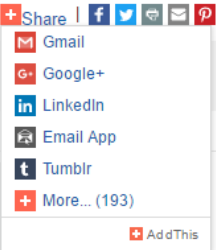
Heavy Snow, Blizzard Conditions Continue for Portions of New England
A powerful coastal storm will continue to bring heavy snow, blustery winds and blizzard conditions to portions of New England today. Lake Effect snow will also impact portions of New York State and the northeast. Meanwhile, locally heavy rain is expected in portions of Texas and the southern Plains. [Read More >](#)

Great Lakes Portal - All Lakes

All Lakes Superior Michigan Huron Erie

Hazards Wave Height Wave Period Wind Speed Wind Gust Weather Temperature





We need to move to:

weather.gov/greatlakes

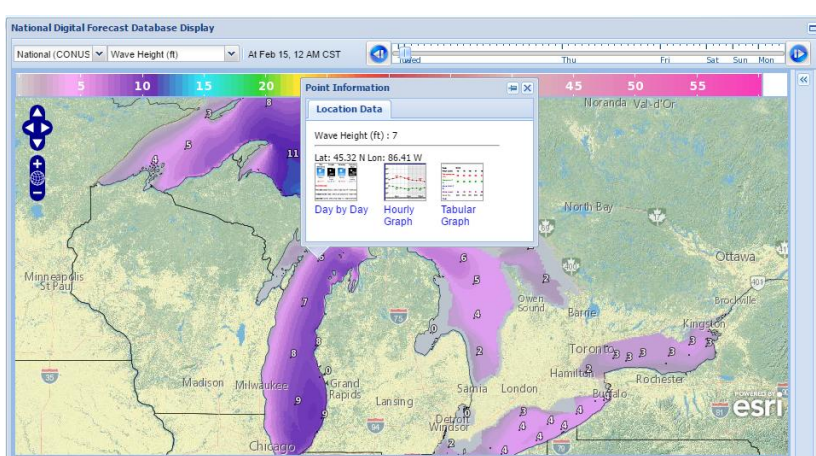
We have made changes:

- to lower bandwidth
- remove looping
- removed the 1 hour data

We need your feedback

Next... Tabular Forecast Anywhere YOU Click

Tabular Forecast



[hide menu] | Font Size: [A](#) [A](#) [A](#) [XML](#)

Weather Elements

- ☐ Temperature (°F)
- ☐ Dewpoint (°F)
- ☐ Wind Chill (°F)
- ☒ Surface Wind kt
- ☐ Sky Cover (%)
- ☐ Precipitation Potential (%)
- ☐ Relative Humidity (%)
- ☐ Rain
- ☐ Thunder
- ☐ Snow
- ☐ Freezing Rain
- ☐ Sleet
- ☐ Freezing Spray
- ☐ Fog

Marine Weather

- ☒ Wave Hgt (ft)-Direction
- ☒ Wave Period (s)
- ☐ Freezing Spray

Probabilistic Forecasts (Experimental)

[Description](#) | [Survey](#)

Quantitative Precipitation 6-hr [info](#)

☐ 0.10 ☐ 0.25 ☐ 0.50 ☐ 1.00

Snowfall 6-hr [info](#)

☐ 0.1in ☐ 1in ☐ 3in ☐ 6in ☐ 12in

48-Hour Period Starting: 9pm Mon, Feb 13 2017 Submit

Back 2 Days Forward 2 Days

Date	02/13			02/14																				
Hour (EST)	21	22	23	00	01	02	03	04	05	06	07	08	09	10	11	12	13	14	15	16	17	18	19	20
Surface Wind (kt)	20	21	21	21	21	20	19	17	16	15	14	14	13	13	13	13	13	13	13	13	13	12	13	
Wind Dir	SSW	SW	SW	SW	SW	SW	SW	SW	SW	SW	WSW	WSW	WSW	WSW	WSW	WSW	WSW	WSW	WSW	WSW	W	W	W	
Gust																								
Wave Height (ft)	3	4	4	4	4	4	4	4	3	3	3	3	2	2	2	2	2	2	2	2	2	2	2	
Wave Period (sec)	4	4	4	5	5	5	5	5	5	5	5	5	5	4	4	4	4	4	4	4	4	2	2	
Wave Direction (°)	190	190	190	180	180	180	180	180	180	180	180	180	170	170	170	170	170	170	170	180	180	180	250	270

Background Slides

OPEN LAKE FORECAST FOR LAKE HURON
NATIONAL WEATHER SERVICE DETROIT/PONTIAC MI
342 AM EST THU FEB 16 2017

FOR WATERS BEYOND FIVE NAUTICAL MILES OFF SHORE ON
LAKE HURON

WAVES ARE THE SIGNIFICANT WAVE HEIGHT - THE AVERAGE
OF THE HIGHEST
1/3 OF THE WAVE SPECTRUM. OCCASIONAL WAVE HEIGHT IS
THE AVERAGE OF
THE HIGHEST 1/10 OF THE WAVE SPECTRUM.

.SYNOPSIS...A RIDGE OF SURFACE HIGH PRESSURE...30.00
INCHES...WILL
PUSH EAST OVER THE GREAT LAKES TODAY. THE GREAT LAKES
WILL REMAIN
UNDER THE INFLUENCE OF BROAD HIGH PRESSURE THROUGHOUT
THE
WEEKEND...ALBEIT SLIGHTLY WEAKENING TO 29.80 INCHES
ON SATURDAY.
SURFACE PRESSURE WILL AGAIN INCREASE NEAR 30.00
INCHES SUNDAY INTO
MONDAY.

LHZ361-162115-
LAKE HURON FROM 5NM EAST OF MACKINAC BRIDGE TO
PRESQUE ISLE LT
BEYOND 5 NM OFF SHORE-
342 AM EST THU FEB 16 2017

.TODAY...NORTH WINDS 10 TO 15 KNOTS DECREASING TO 5
TO 10 KNOTS
LATE IN THE MORNING, THEN BACKING TO THE NORTHWEST IN
THE
AFTERNOON. WAVES 1 TO 3 FEET.
.TONIGHT...LIGHT AND VARIABLE WINDS BECOMING
SOUTHEAST 5 TO
10 KNOTS AFTER MIDNIGHT, THEN BECOMING SOUTH 10 TO 15
KNOTS EARLY
IN THE MORNING. WAVES 2 FEET OR LESS.
.FRIDAY...SOUTHEAST WINDS 10 TO 15 KNOTS. WAVES 1 TO
2 FEET

KDTX 160905
OLFLH

EXPERIMENTAL TABULAR OPEN LAKE FORECAST FOR LAKE
HURON

NATIONAL WEATHER SERVICE DETROIT/PONTIAC MI
405 AM EST THU FEB 16 2017

WAVES ARE THE SIGNIFICANT WAVE HEIGHT - THE AVERAGE
OF THE HIGHEST
1/3 OF THE WAVE SPECTRUM. OCCASIONAL WAVE HEIGHT IS
THE AVERAGE OF
THE HIGHEST 1/10 OF THE WAVE SPECTRUM.

.SYNOPSIS...A RIDGE OF SURFACE HIGH
PRESSURE...30.00 INCHES...WILL
PUSH EAST OVER THE GREAT LAKES TODAY. THE GREAT
LAKES WILL REMAIN
UNDER THE INFLUENCE OF BROAD HIGH PRESSURE
THROUGHOUT THE
WEEKEND...ALBEIT SLIGHTLY WEAKENING TO 29.80 INCHES
ON SATURDAY.
SURFACE PRESSURE WILL AGAIN INCREASE NEAR 30.00
INCHES SUNDAY INTO
MONDAY.

LHZ361-162100-
LAKE HURON FROM 5NM EAST OF MACKINAC BRIDGE TO
PRESQUE ISLE LT
BEYOND 5 NM OFF SHORE-
405 AM EST THU FEB 16 2017

.TODAY...
WEATHER.....PARTLY SUNNY.
SFC WINDS.....NORTHWEST 10 TO 15 KNOTS.
100 FT WINDS.....NORTHWEST 15 TO 20 KNOTS

LHZ361-132100-

LAKE HURON FROM 5NM EAST OF MACKINAC BRIDGE TO PRESQUE ISLE LT
BEYOND 5 NM OFF SHORE-

1005 AM EST MON FEB 13 2017

...GALE WATCH IN EFFECT FROM LATE TUESDAY NIGHT THROUGH WEDNESDAY
AFTERNOON...

.REST OF TODAY...

WEATHER.....PARTLY SUNNY.

SFC WINDS.....WEST 10 TO 15 KNOTS.

100-FT WINDS.....WEST 15 TO 20 KNOTS.

SIG WAVES.....2 TO 4 FEET / AROUND 1 METER /.

OCNL WAVES.....AROUND 5 FEET / 2 METERS /.

.TONIGHT...

WEATHER.....MOSTLY CLOUDY WITH CHANCE OF SNOW SHOWERS.

SFC WINDS.....SOUTHWEST 15 TO 20 KNOTS.

100-FT WINDS.....SOUTHWEST 20 TO 25 KNOTS.

SIG WAVES.....3 TO 5 FEET / 1-2 METERS /.

OCNL WAVES.....AROUND 6 FEET / 2 METERS /.

.TUESDAY...

WEATHER.....CLOUDY WITH CHANCE OF SNOW SHOWERS.

SFC WINDS.....WEST 15 TO 20 KNOTS.

100-FT WINDS.....WEST 20 TO 25 KNOTS.

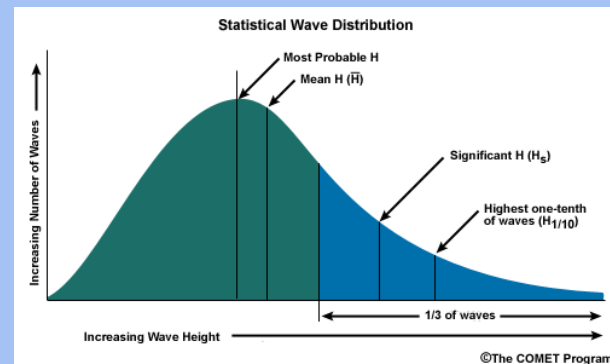
SIG WAVES.....3 TO 5 FEET / 1-2 METERS /.

OCNL WAVES.....AROUND 6 FEET / 2 METERS /.

TUESDAY NIGHT

100 Ft Winds, often closely match the wind gust but during some times of the year are winds which may remain just above the surface.

weather.gov/Dtx/Glftable

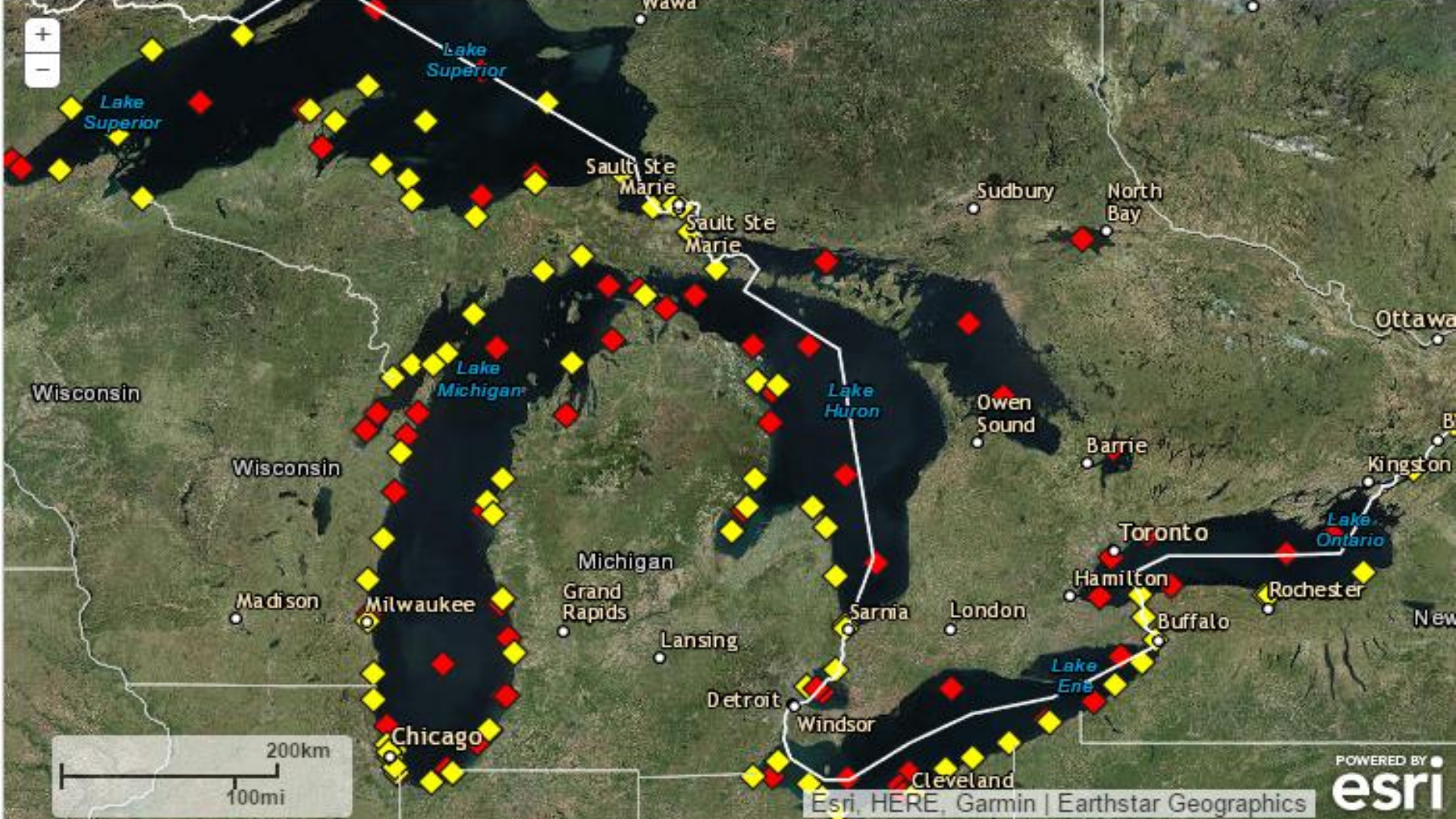


Occasional Waves

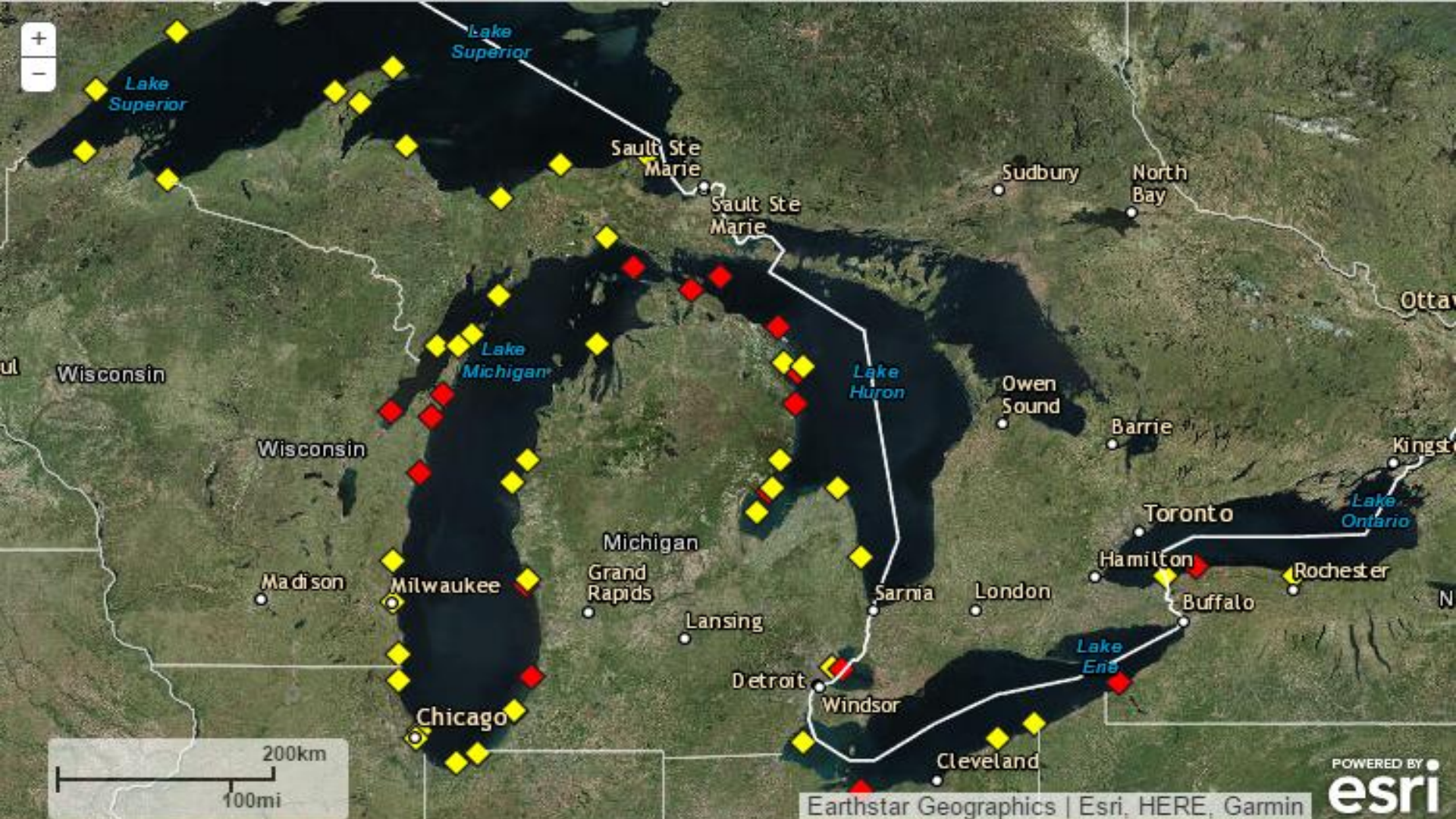
Great Lakes Weather

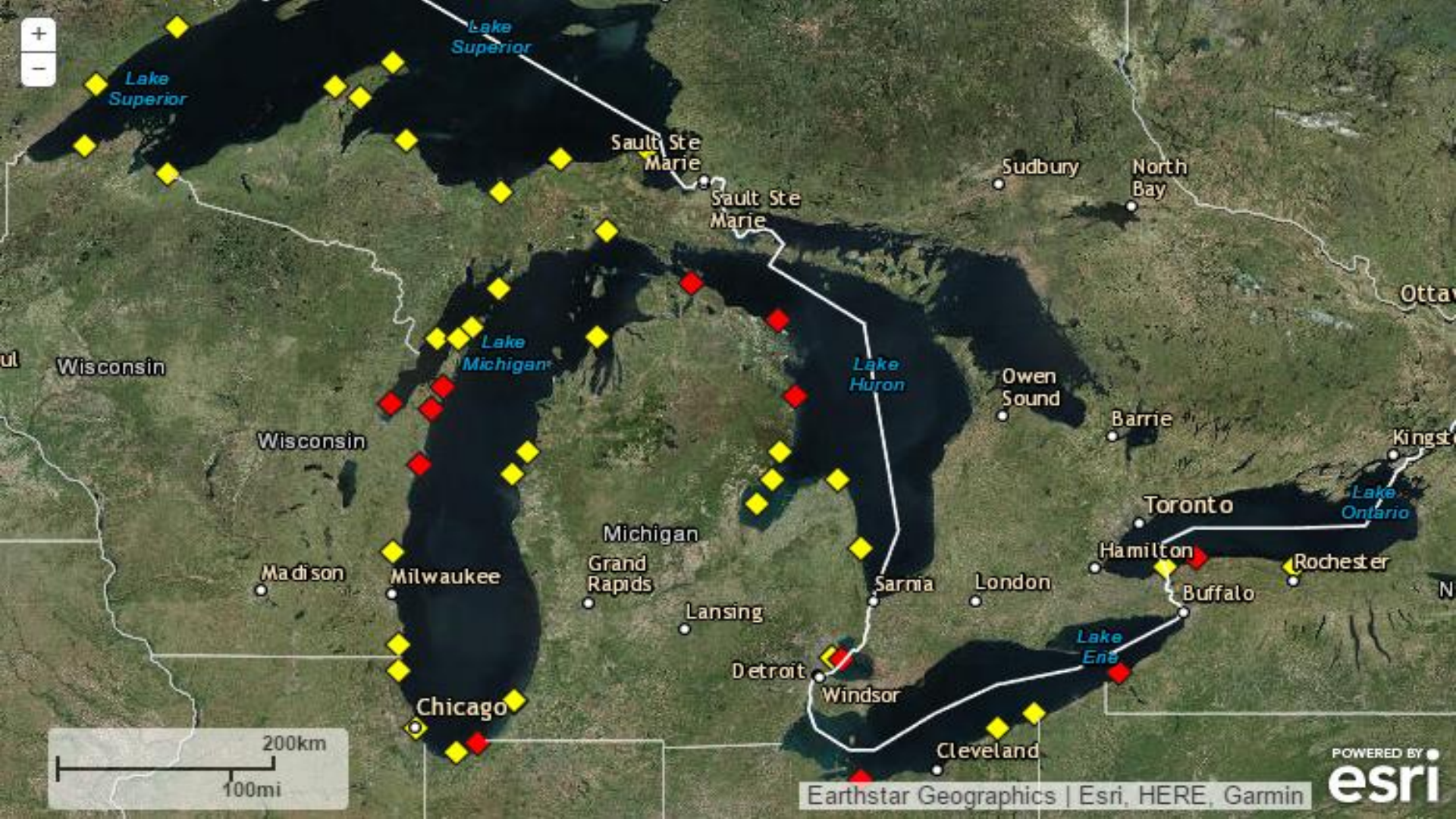
NWS Weather Sites

VOS Observations









GLFLH

OPEN LAKE FORECAST FOR LAKE HURON
NATIONAL WEATHER SERVICE DETROIT/PONTIAC MI
944 AM EST MON FEB 13 2017

FOR WATERS BEYOND FIVE NAUTICAL MILES OFF SHORE ON LAKE HURON

WAVES ARE THE SIGNIFICANT WAVE HEIGHT - THE AVERAGE OF THE HIGHEST 1/3 OF THE WAVE SPECTRUM. OCCASIONAL WAVE HEIGHT IS THE AVERAGE OF THE HIGHEST 1/10 OF THE WAVE SPECTRUM.

.SYNOPSIS...LOW PRESSURE...29.70 INCHES...WILL CONTINUE TO TRACK EAST THROUGH THE MID ATLANTIC STATES. A RIDGE OF HIGH PRESSURE...30.20 INCHES...WILL BUILD INTO THE CENTRAL GREAT LAKES TODAY. A NEW SURFACE TROUGH WILL THEN DEVELOP OVER THE REGION ON TUESDAY...FOLLOWED BY A STRONG COLD FRONT SWINGING THROUGH ON TUESDAY NIGHT.

LHZ361-132100-
LAKE HURON FROM 5NM EAST OF MACKINAC BRIDGE TO PRESQUE ISLE LT
BEYOND 5 NM OFF SHORE-
944 AM EST MON FEB 13 2017

...GALE WATCH IN EFFECT FROM LATE TUESDAY NIGHT THROUGH WEDNESDAY AFTERNOON...

.REST OF TODAY...WEST WINDS 5 TO 10 KNOTS BACKING TO THE SOUTHWEST LATE IN THE AFTERNOON. WAVES 1 TO 3 FEET.
.TONIGHT...SOUTH WINDS 10 TO 15 KNOTS BECOMING SOUTHWEST 15 TO 20 KNOTS IN THE LATE EVENING AND EARLY MORNING...THEN DECREASING TO 10 TO 15 KNOTS EARLY IN THE MORNING. A CHANCE OF SNOW SHOWERS. WAVES 1 TO 3 FEET BUILDING TO 2 TO 4 FEET IN THE LATE EVENING AND OVERNIGHT.

.TUESDAY...WEST WINDS 10 TO 15 KNOTS INCREASING TO 15 TO 20 KNOTS IN THE LATE MORNING AND AFTERNOON. A CHANCE OF SNOW SHOWERS. WAVES 3 TO 5 FEET.

.TUESDAY NIGHT...WEST WINDS 15 TO 20 KNOTS WITH GUSTS UP TO 30 KNOTS BECOMING NORTHWEST 20 TO 25 KNOTS WITH GUSTS UP TO 35 KNOTS AFTER MIDNIGHT. SCATTERED SNOW SHOWERS. WAVES 4 TO 6 FEET. WAVES OCCASIONALLY AROUND 8 FEET.

.WEDNESDAY...NORTHWEST WINDS 20 TO 25 KNOTS WITH GUSTS UP TO 35 KNOTS BECOMING NORTH 10 TO 15 KNOTS. SCATTERED SNOW SHOWERS EARLY IN THE MORNING. WAVES 4 TO 6 FEET SUBSIDING TO 2 TO 4 FEET LATE IN THE EVENING. WAVES OCCASIONALLY AROUND 8 FEET.

.THURSDAY...NORTHWEST WINDS 5 TO 10 KNOTS BECOMING LIGHT AND VARIABLE. WAVES 1 TO 3 FEET.

.FRIDAY...SOUTHEAST WINDS 5 TO 10 KNOTS. WAVES 2 FEET OR LESS.

GLFLH

EXPERIMENTAL TABULAR OPEN LAKE FORECAST FOR LAKE HURON
NATIONAL WEATHER SERVICE DETROIT/PONTIAC MI
1005 AM EST MON FEB 13 2017

WAVES ARE THE SIGNIFICANT WAVE HEIGHT - THE AVERAGE OF THE HIGHEST 1/3 OF THE WAVE SPECTRUM. OCCASIONAL WAVE HEIGHT IS THE AVERAGE OF THE HIGHEST 1/10 OF THE WAVE SPECTRUM.

.SYNOPSIS...LOW PRESSURE...29.70 INCHES...WILL CONTINUE TO TRACK EAST THROUGH THE MID ATLANTIC STATES. A RIDGE OF HIGH PRESSURE...30.20 INCHES...WILL BUILD INTO THE CENTRAL GREAT LAKES TODAY. A NEW SURFACE TROUGH WILL THEN DEVELOP OVER THE REGION ON TUESDAY...FOLLOWED BY A STRONG COLD FRONT SWINGING THROUGH ON TUESDAY NIGHT.

LHZ361-132100-
LAKE HURON FROM 5NM EAST OF MACKINAC BRIDGE TO PRESQUE ISLE LT
BEYOND 5 NM OFF SHORE-
1005 AM EST MON FEB 13 2017

...GALE WATCH IN EFFECT FROM LATE TUESDAY NIGHT THROUGH WEDNESDAY AFTERNOON...

.REST OF TODAY...
WEATHER.....PARTLY SUNNY.
SFC WINDS.....WEST 10 TO 15 KNOTS.
100-FT WINDS.....WEST 15 TO 20 KNOTS.
SIG WAVES.....2 TO 4 FEET / AROUND 1 METER /.
OCNL WAVES.....AROUND 5 FEET / 2 METERS /.

.TONIGHT...
WEATHER.....MOSTLY CLOUDY WITH CHANCE OF SNOW SHOWERS.
SFC WINDS.....SOUTHWEST 15 TO 20 KNOTS.
100-FT WINDS.....SOUTHWEST 20 TO 25 KNOTS.
SIG WAVES.....3 TO 5 FEET / 1-2 METERS /.
OCNL WAVES.....AROUND 6 FEET / 2 METERS /.

.TUESDAY...
WEATHER.....CLOUDY WITH CHANCE OF SNOW SHOWERS.
SFC WINDS.....WEST 15 TO 20 KNOTS.
100-FT WINDS.....WEST 20 TO 25 KNOTS.
SIG WAVES.....3 TO 5 FEET / 1-2 METERS /.

SIGNIFICANT WAVES – AVG OF HIGHEST 1/3

OCCASIONAL WAVES – AVG OF HIGHEST 1/10

100 FOOT/30 METER WIND SPEEDS ARE ROUGHLY EQUIVALENT TO SURFACE WIND GUSTS

Occasional waves are only listed when predicted values are at or above 5 feet.

Great Lakes VOS Page

[.weather.gov/dmawds/](https://www.weather.gov/dmawds/)



NATIONAL WEATHER SERVICE
NATIONAL OCEANIC AND ATMOSPHERIC ADMINISTRATION



Digital Marine Weather Dissemination System

Welcome to the National Weather Service Great Lakes Digital Marine Weather Dissemination System.

[Voluntary Observing Ship Data Entry](#)

Changes to the DMAWDS Site

.weather.gov/dmawds/



NATIONAL WEATHER SERVICE
NATIONAL OCEANIC AND ATMOSPHERIC ADMINISTRATION



Digital Marine Weather Dissemination System

Welcome to the National Weather Service Great Lakes Digital Marine Weather Dissemination System.

[Voluntary Observing Ship Data Entry](#)

[Text/Graphics Forecasts \(Unzipped Version\)](#)



US Dept of Commerce
National Oceanic and Atmospheric Administration
National Weather Service
1325 East West Highway
Silver Spring, MD 20910

Disclaimer
Information Quality
Help
Glossary

Privacy Policy
Freedom of Information Act
(FOIA)
About Us
Career Opportunities



NATIONAL WEATHER SERVICE

NATIONAL OCEANIC AND ATMOSPHERIC ADMINISTRATION



Ship Observation Entry Form

Welcome to the Voluntary Observing Ship data entry page. Thank you for taking the time to submit your observation. The data you enter here plays a major important role in producing accurate weather and wave forecasts. Your observation is included in the computer models that create weather and wind forecasts. The more initial data in the model, the better the forecast; especially over the data sparse open waters of the Great Lakes.

If you need to make a correction to your observation, click on the back button after you transmitted your observation and make the final correction and retransmit your observation.

Your ship's radio callsign (which is also your login ID here) must be registered with DMAWDS in order to send an observation.

Note: Any element in red denotes mandatory observed entry.

What is the radio call sign (ID) of your ship? (NOTE: USE LETTERS AND NUMBERS ONLY. NO SPACES.)

What is your DMAWDS password?

Day of the month in UTC: 09 ▼

Actual Time of Observation to the Nearest Whole Hour in UTC: 05 ▼

What is the latitude in tenths of a degree (example: 42.8)?

What is the longitude in tenths of a degree (example: 82.1)?

Enter the wind speed to the nearest knot (example: 12)?

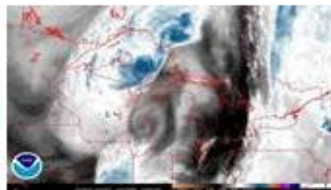
Enter the wind direction in degrees (example: 90, 270):

Enter the wave height in feet (example: 6, 12)?

Great Lakes Web Portal Changes



Radar



Satellite



Digital Graphics



Observations



Ice

Additional Resources for Great Lakes Graphical Forecasts

Text Products

[Lake Superior](#)
[Lake Michigan](#)
[Lake Huron](#)
[Lake Erie](#)
[Lake Ontario](#)
[Area Forecast Discussions](#)

GLERL Great Lakes Coastal Forecast System

[Winds](#)
[Waves](#)
[Ice Cover](#)

Seasonal

[Great Lakes Ice](#)
[Beach Hazards](#)

Safety & Education

[NOAA Weather Radio](#)
[Rip Currents](#)
[Safe Boating](#)
[Beaufort Wind Scale](#)
[Marine Forecast FAQ](#)
[Sunrise/Sunset Info](#)
[Thunderbay National Marine Sanctuary](#)

Science

[CoastWatch](#)
[Edmund Fitzgerald](#)
[Great Lakes Storm of 1913](#)
[NOAA nowCoast](#)
[Tides & Currents](#)

Forecast Offices

[Buffalo, NY](#)
[Cleveland, OH](#)
[Chicago, IL](#)
[Detroit, MI](#)
[Duluth, MN](#)
[Gaylord, MI](#)
[Green Bay, WI](#)
[Grand Rapids, MI](#)
[Marquette, MI](#)
[Milwaukee, WI](#)
[Northern Indiana](#)
[Marine Forecast Offices](#)
[Nationwide](#)

Partners

[GLERL](#)
[National Data Buoy Center](#)
[National Hurricane Center](#)
[National Marine Page](#)
[US Coast Guard](#)
[Meteorological Services of Canada](#)

Miscellaneous

[Water Temperatures](#)
[Water Temperature](#)
[GLOFS](#)
[Nautical Charts](#)
[Bathymetry](#)

Ever Wonder?




What are they thinking?

Great Lakes Portal - All Lakes

Share |    

All Lakes	Superior	Michigan	Huron	Erie	Ontario
-----------	----------	----------	-------	------	---------

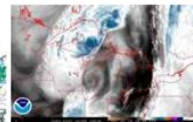
Hazards Wave Height Wave Period Wind Speed Wind Gust Weather Temperature

 Flood Warning
 Flood Advisory
 Small Craft Advisory

Graphic Created
February 4th, 2016
9:40 AM CST



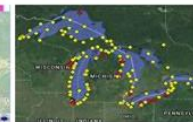
Radar



Satellite



Digital Graphics



Observations



Ice

Additional Resources for Great Lakes Graphical Forecasts

Text Products

[Lake Superior](#)
[Lake Michigan](#)
[Lake Huron](#)
[Lake Erie](#)
[Lake Ontario](#)
[Area Forecast Discussions](#)

Safety & Education

[NOAA Weather Radio](#)
[Rip Currents](#)
[Safe Boating](#)
[Beaufort Wind Scale](#)
[Marine Forecast FAQ](#)
[Sunrise/Sunset Info](#)
[Thunderbay National Marine](#)

Forecast Offices

[Buffalo, NY](#)
[Cleveland, OH](#)
[Chicago, IL](#)
[Detroit, MI](#)
[Duluth, MN](#)
[Gaylord, MI](#)
[Green Bay, WI](#)

Partners

[GLERL](#)
[National Data Buoy Center](#)
[National Hurricane Center](#)
[National Marine Page](#)
[US Coast Guard](#)
[Meteorological Services of Canada](#)

Local forecast by
"City, St" or ZIP code

Enter location ...

[Location Help](#)

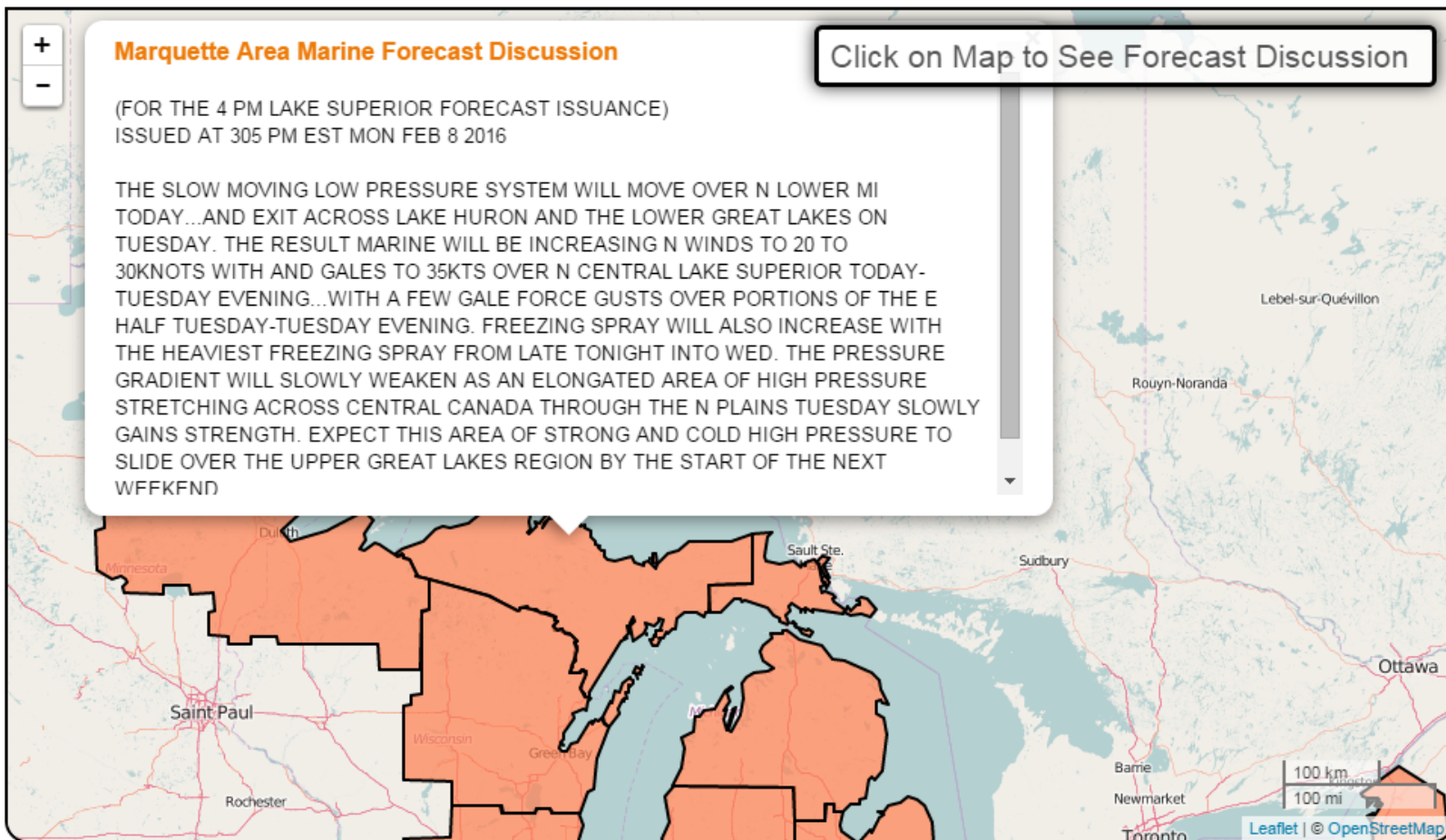


Marquette Area Marine Forecast Discussion

(FOR THE 4 PM LAKE SUPERIOR FORECAST ISSUANCE)
ISSUED AT 305 PM EST MON FEB 8 2016

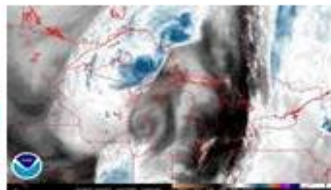
THE SLOW MOVING LOW PRESSURE SYSTEM WILL MOVE OVER N LOWER MI TODAY...AND EXIT ACROSS LAKE HURON AND THE LOWER GREAT LAKES ON TUESDAY. THE RESULT MARINE WILL BE INCREASING N WINDS TO 20 TO 30KNOTS WITH AND GALE TO 35KTS OVER N CENTRAL LAKE SUPERIOR TODAY-TUESDAY EVENING...WITH A FEW GALE FORCE GUSTS OVER PORTIONS OF THE E HALF TUESDAY-TUESDAY EVENING. FREEZING SPRAY WILL ALSO INCREASE WITH THE HEAVIEST FREEZING SPRAY FROM LATE TONIGHT INTO WED. THE PRESSURE GRADIENT WILL SLOWLY WEAKEN AS AN ELONGATED AREA OF HIGH PRESSURE STRETCHING ACROSS CENTRAL CANADA THROUGH THE N PLAINS TUESDAY SLOWLY GAINS STRENGTH. EXPECT THIS AREA OF STRONG AND COLD HIGH PRESSURE TO SLIDE OVER THE UPPER GREAT LAKES REGION BY THE START OF THE NEXT WFFKFND

Click on Map to See Forecast Discussion





Radar



Satellite



Digital Graphics



Observations



Ice

Additional Resources for Great Lakes Graphical Forecasts

Text Products

[Lake Superior](#)
[Lake Michigan](#)
[Lake Huron](#)
[Lake Erie](#)
[Lake Ontario](#)
[Area Forecast Discussions](#)

GLERL Great Lakes Coastal Forecast System

[Winds](#)
[Waves](#)
[Ice Cover](#)

Seasonal

[Great Lakes Ice](#)
[Beach Hazards](#)

Safety & Education

[NOAA Weather Radio](#)
[Rip Currents](#)
[Safe Boating](#)
[Beaufort Wind Scale](#)
[Marine Forecast FAQ](#)
[Sunrise/Sunset Info](#)
[Thunderbay National Marine Sanctuary](#)

Science

[CoastWatch](#)
[Edmund Fitzgerald](#)
[Great Lakes Storm of 1913](#)
[NOAA nowCoast](#)
[Tides & Currents](#)

Forecast Offices

[Buffalo, NY](#)
[Cleveland, OH](#)
[Chicago, IL](#)
[Detroit, MI](#)
[Duluth, MN](#)
[Gaylord, MI](#)
[Green Bay, WI](#)
[Grand Rapids, MI](#)
[Marquette, MI](#)
[Milwaukee, WI](#)
[Northern Indiana](#)
[Marine Forecast Offices](#)
[Nationwide](#)

Partners

[GLERL](#)
[National Data Buoy Center](#)
[National Hurricane Center](#)
[National Marine Page](#)
[US Coast Guard](#)
[Meteorological Services of Canada](#)

Miscellaneous

[Water Temperatures](#)
[Water Temperature](#)
[GLOFS](#)
[Nautical Charts](#)
[Bathymetry](#)