



US Army Corps of Engineers



# Great Lakes Water Levels

Keith Kompoltowicz  
Lead Forecaster  
USACE-Detroit



# ***Current Water Level Forecast***

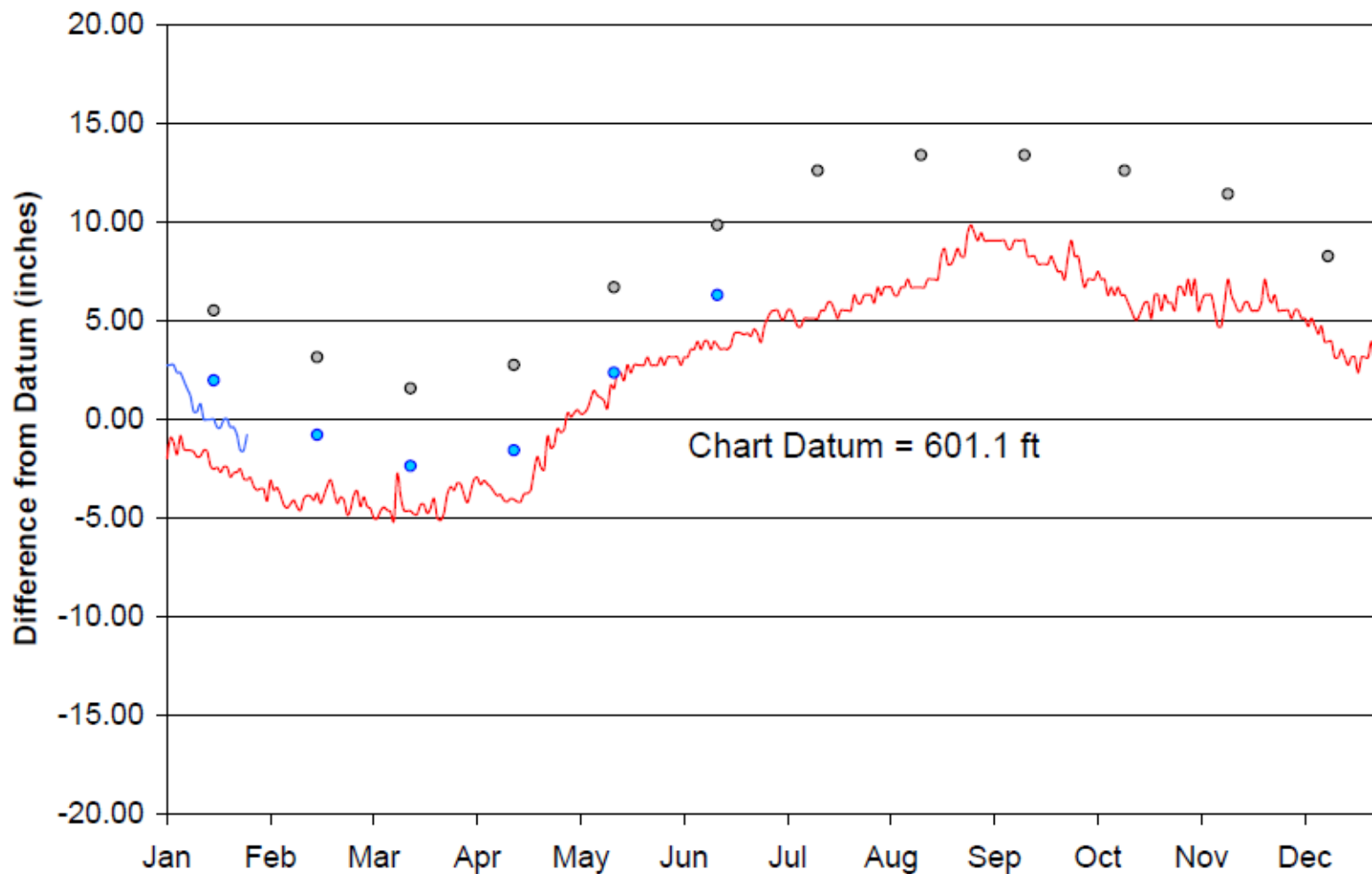
- Current Monthly Bulletin was done earlier this month
- So far in January, dry conditions have been experienced throughout the basin
- Great Lakes basin as a whole has received only 35% of average precip in JAN.



# US Army Corps of Engineers



## Lake Superior

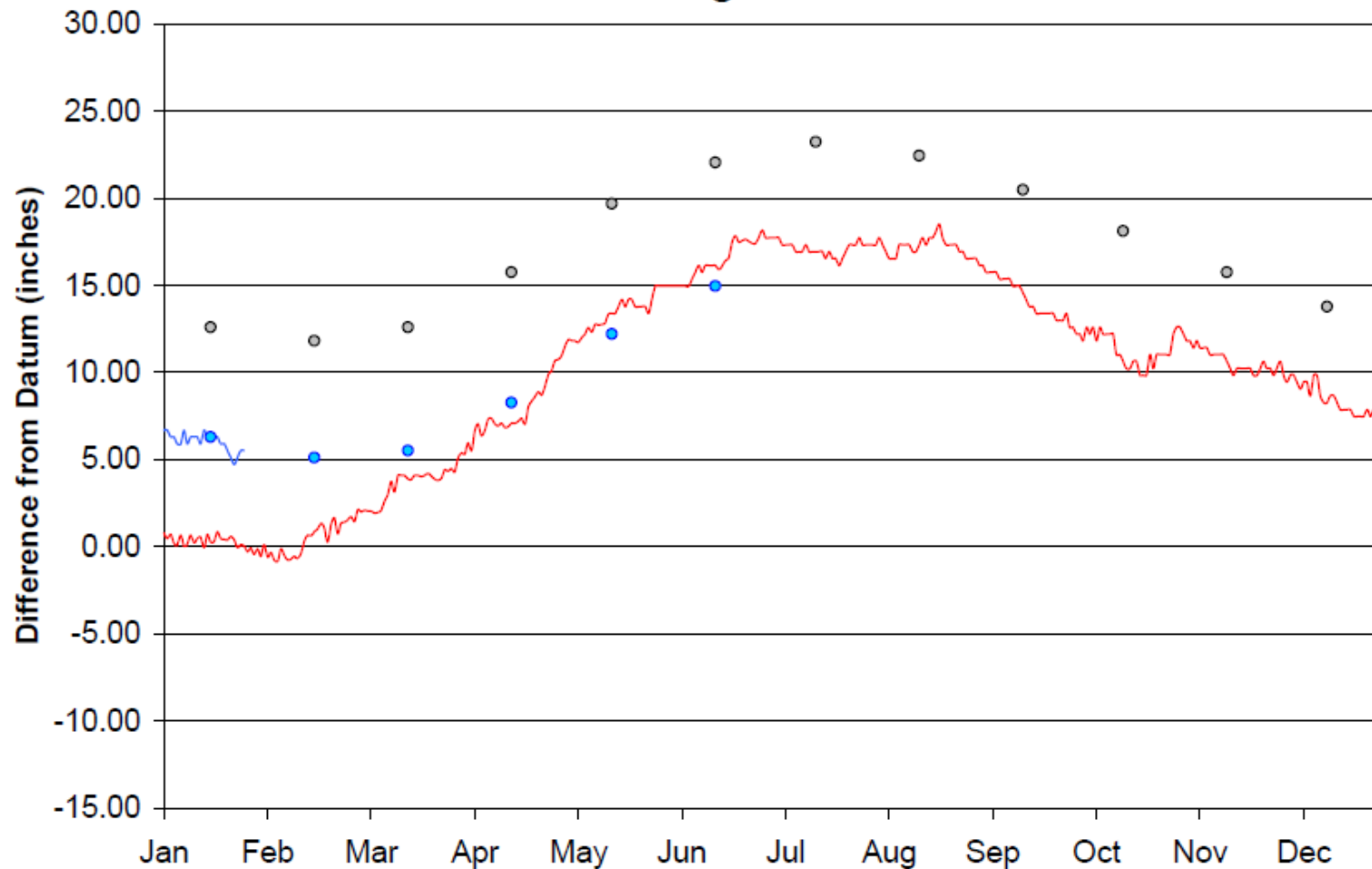




# US Army Corps of Engineers



## Lake Michigan-Huron

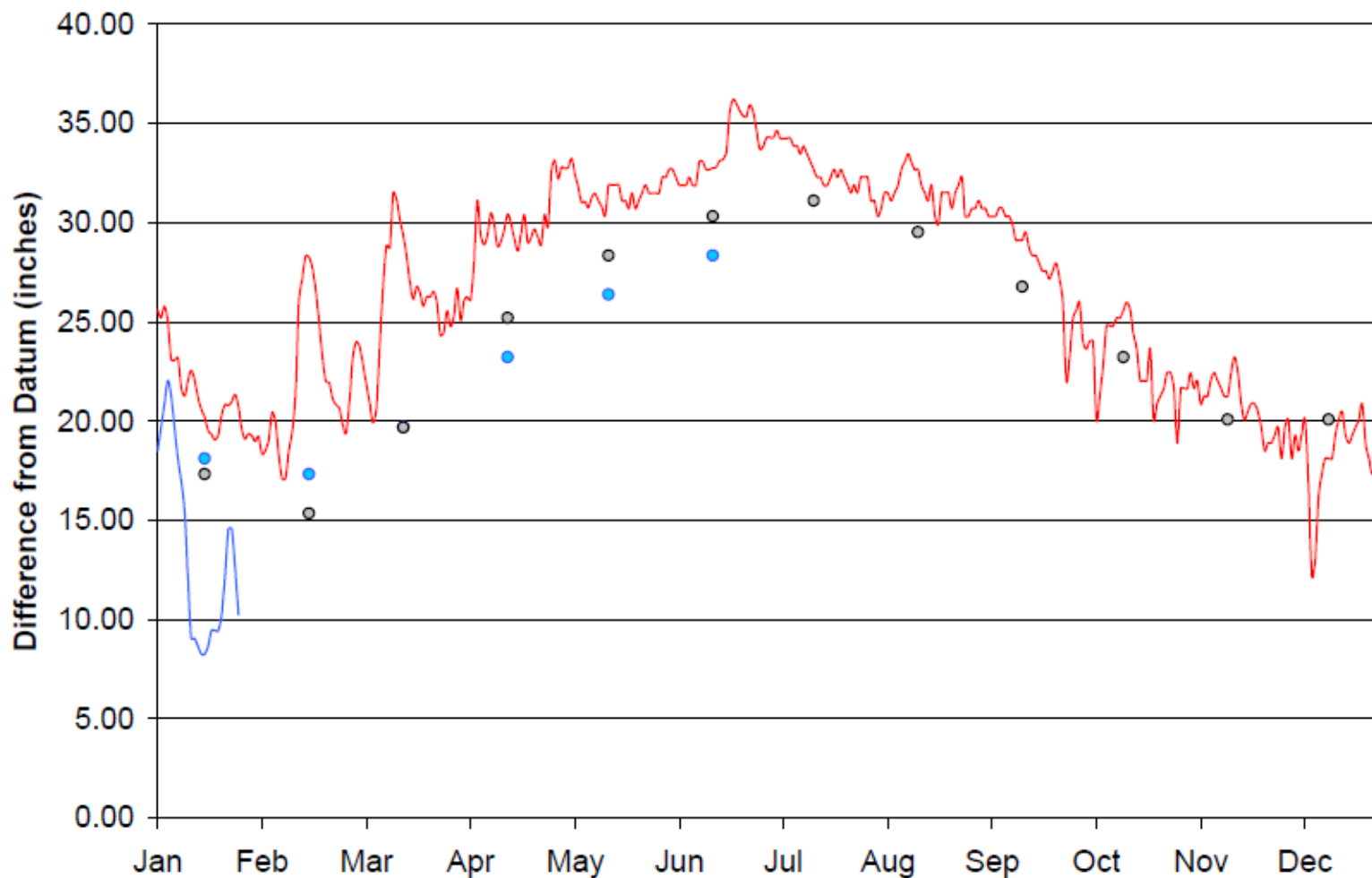




# US Army Corps of Engineers



## Lake St. Clair

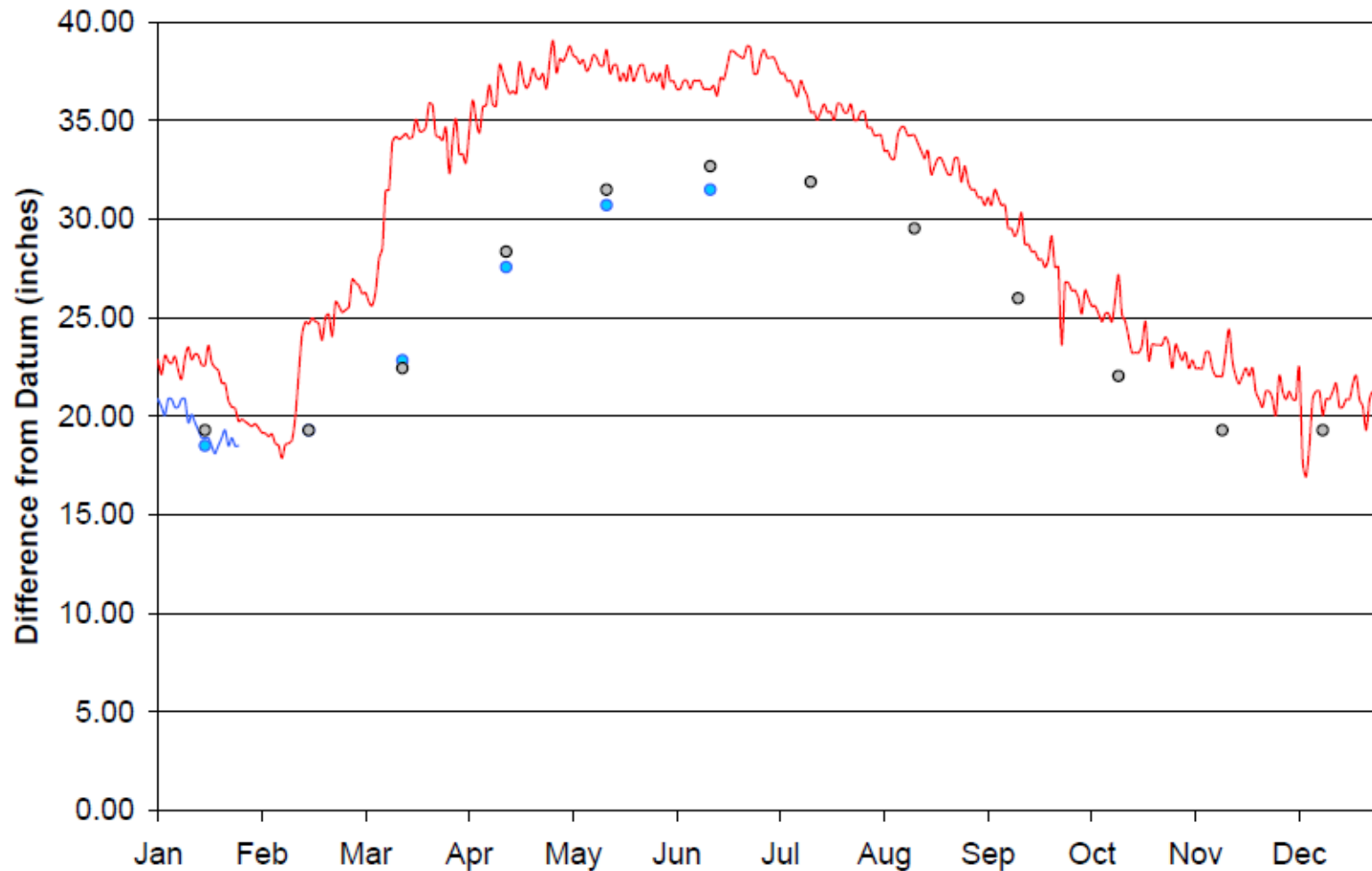




# US Army Corps of Engineers



## Lake Erie



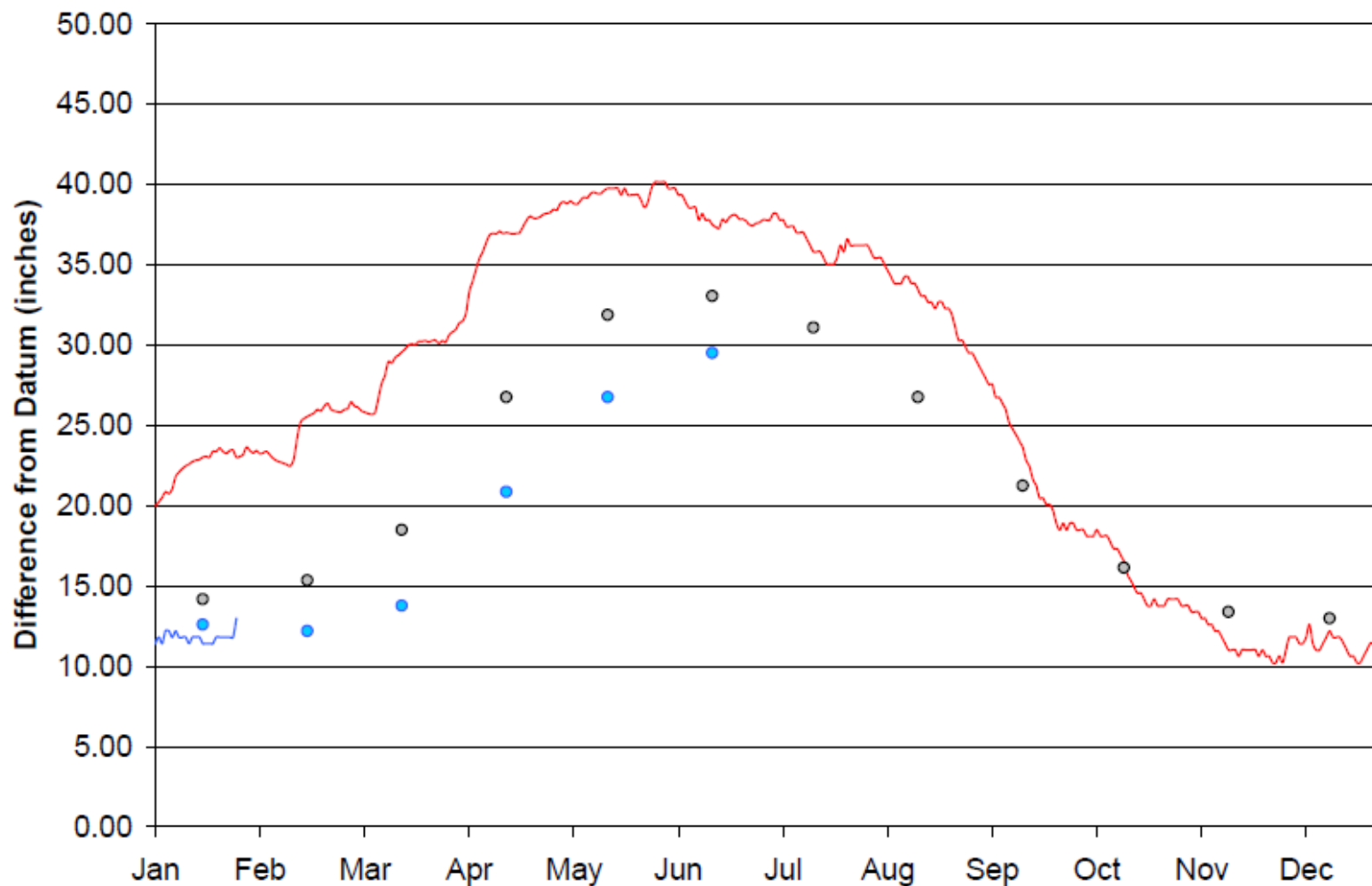




# US Army Corps of Engineers



## Lake Ontario





US Army Corps of Engineers



# Connecting Channels Forecast Upgrades





# ***Connecting Channels Forecast***

- Primary audience is the commercial navigation community
- Other subscribers include shoreline property owners and recreational boaters
- Shown in the USCG's Local Notice to Mariners
- Forecast is currently done twice a month...on or around the 3<sup>rd</sup> of each month for the 5<sup>th</sup> and 20<sup>th</sup> and again on or around the 15<sup>th</sup> for the 20<sup>th</sup> and next month's 5<sup>th</sup>



# US Army Corps of Engineers



## GREAT LAKES, CONNECTING CHANNELS AND ST. LAWRENCE RIVER WATER LEVELS AND DEPTHS

Department of the Army, Detroit District Corps of Engineers

Expected water levels on the Great Lakes, Connecting Channels and the St. Lawrence River, as well as the period-of-record average levels for the Great Lakes, are given in inches above (+) or below (-) Low-Water Datum (LWD). LWD is a plane of reference on a navigation chart. It is also known as Chart Datum. LWD elevations shown below are given in International Great Lakes Datum, 1985 (IGLD 1985). This information is on the World Wide Web at <http://www.lre.usace.army.mil/ghh/forecasts>

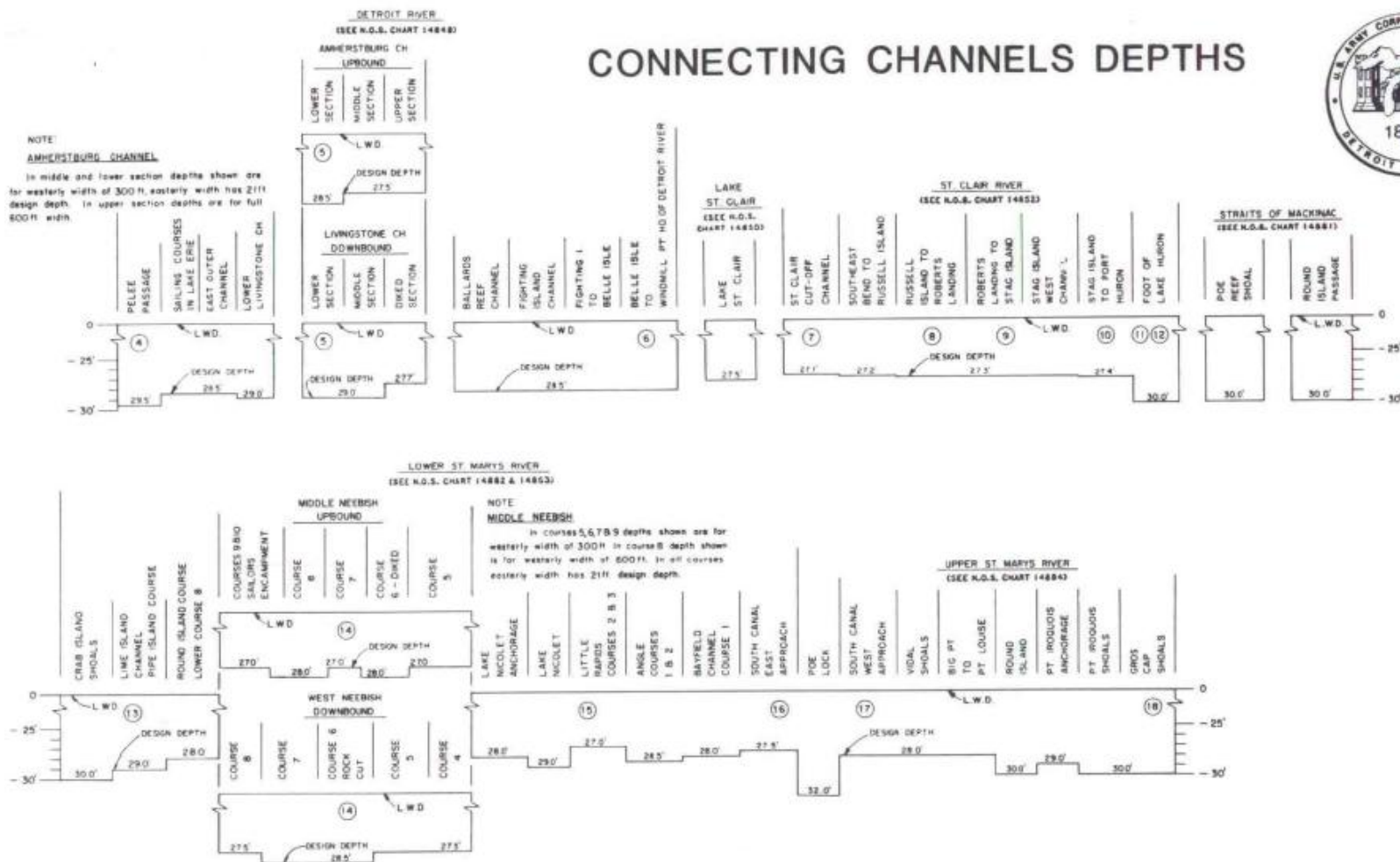
	Period of record average levels (1900-2008)	Expected Levels	Period of record average levels (1900-2008)	Expected Levels	Low Water Datum
	<u>JAN 20</u>	<u>JAN 20 2010</u>	<u>FEB 5</u>	<u>FEB 5 2010</u>	<u>IGLD 1985</u>
<b>GREAT LAKES</b>					
Lake Ontario	16	12	18	12	243.3
Lake Erie	18	19	18	20	569.2
Lake St. Clair	14	10	12	13	572.3
Lake Michigan-Huron	12	5	12	4	577.5
Lake Superior	5	0	3	-1	601.1
<b>ST. LAWRENCE RIVER</b>					
(0) Above Long Sault Dam		38		29	237.9
(1) Above Iroquois Dam		22		16	240.3
(2) Ogdensburg		18		14	242.4
(2.1) Alexandria Bay		14		13	243.0
(3) Head of river at Cape Vincent		12		12	243.3
<b>DETROIT RIVER</b>					
(4) Lake Erie at Pelee Passage		19		20	569.2
(5) Mouth of River at Gibraltar		17		18	569.5
(6) Head of River above Belle Isle		10		13	572.0



# US Army Corps of Engineers



## CONNECTING CHANNELS DEPTHS



This chart is for general information only.

Vessel masters should refer to Local Notice to Mariners for extent of shoaling and scattered bedrock projections in all channels.



# ***Connecting Channels Forecast***

- Forecast is shown as a depth of water relative to low water datum at several locations along the St. Marys, St. Clair, Detroit and St. Lawrence Rivers
- Each value is based on the water level of the upstream and downstream lakes and takes into account any regulated flows (St. Marys and St. Lawrence)





# ***Potential Upgrades***

- Our goal is to continue to provide useful data
- Is this product useful to your operations?
- Are there other points we should include?
- Would you like to see the forecast done on a more frequent basis or for other time frames?
- Would you like to see a format change, maybe graphics and water level ranges or probabilities?



**US Army Corps of Engineers**



**Send any questions or comments to:**

**Keith Kompoltowicz  
CELRE-HH-W  
477 Michigan Avenue  
Detroit MI 48226**

**or**

**[Keith.w.kompoltowicz@usace.army.mil](mailto:Keith.w.kompoltowicz@usace.army.mil)**

**313-226-6442**